



RYARSH PARISH COUNCIL

November Parish Council Meeting

- The Parish Council has reported to Kent Highways – the 40mph signs on Roughetts Road concealed by undergrowth, the overgrown verges on Roughetts Road and asked for safety measures to be considered on Roughetts Road
- The Parish Council has asked Trinity to cut back vegetation blocking sight lines from Ryarsh Park to Roughetts Road and The Street
- Cllrs McKinlay and Barton attended the Annual Inspection of the Play Area. Cllrs Barton and Emson are carrying out some maintenance work to the gate at the entrance of the park.
- Cllrs approved a donation to Heart of Kent Hospice, who cared for 5 patients from Ryarsh in 2022.



County Councillor Sarah Hohler

- 3871 Ukrainians have been matched with 1642 hosts in Kent, more than any other county in the UK. 2927 have already arrived and a further 944 expected. If you would like to host please call 03000 412 424. Due to the cost of living increase, KCC will give an extra £50 per month to host one person, increasing by £100 for each extra guest. An extra £550 for 6 people, for example.
- Minerals Plan Consultation: This is being done to link with the Draft Local Plan. No requirement for any mineral sites except proposal sites for hard rock quarries.
- HWRC Tovil: A dedicated furniture container has opened at Tovil so furniture can be given to those in most need or sold to raise money for charities
- Sports: Capital grants for sport in Kent have awarded to local organisations
- No Use Empty: This KCC scheme has enabled a Margate sea front building to be brought back to use
- Kent Together: For Advice and Support ring 03000 41 92 92

TMBC

£500,000 business boost to combat slowdown

<https://www.tmbc.gov.uk/news/article/78/-500-000-business-boost-to-combat-slowdown>



Police

Between 21:00 on Wednesday 23rd of November and 07:00 on Thursday 24th of November, somebody broke into a garden workroom at a residential property on London Road. They do not appear to have taken anything.

Next Parish Council meeting

The next meeting which will be held in The Davison Room of Ryarsh Village Hall is **Monday 12th December 2022 at 8pm.**

You can contact the Clerk by email at clerk@ryarsh-pc.gov.uk. For more information, please go to our website www.ryarsh-pc.gov.uk

Kent Country Eye App

Country Eye is a free App to users in Kent; it records and disseminates information using smartphone technology. It was designed to help communities and residents in Kent to receive information and to report non urgent issues quickly and efficiently. The Country Eye team analyse the information and disseminate it as appropriate. This may include email, text or broadcast to other subscriber's smartphones.

The Country Eye app identifies the following Categories:

Animal, Wildlife Crime – Hare Coursing, Poaching, Suspicious Behaviour
Aviation – Low flying Aircraft, Unusual Activity, Suspicious Behaviour
Farm Crime – Arson, Suspicious Behaviour, Trespass
Fly Tipping
Heritage Crime – Metal Detecting, Night Hawking, Off-Roading, Suspicious Behaviour
HGV Watch
Highways issues.
Kent Fire & Rescue – Hydrant Reporting and Water Reservoirs/Storage on Farms
Maritime - Suspicious Vessels, Vehicles, Behaviour

Unlike messaging using Social Media groups, the integrity of information from Country Eye has been accepted as evidential by the Crown Prosecution Service. The App is also GDPR compliant.

Country Eye has links to the following Agencies:

- Kent Police
- Kent Fire & Rescue Service
- K.C.C. Intelligence Unit
- Special Branch
- The 13 Borough/District Councils in Kent
- Kent Heritage Watch
- Kent Neighbourhood Watch
- Kent Wildlife Trust
- HGV Watch

Sign up is simple; the system requires a contact number, email address and postcode. Personal preferences can be set to enable the location finder and the users chosen radius of information.

Recording information is intuitive; click the camera icon, take an image, identify the exact location, fill in the type of crime, whether you have a crime number, and any other useful information. The time and date will be automatically recorded.

Country Eye went live in 2016 and has over 7,500 users, has reported over 12,000 submissions to various agencies resulting in many arrests.

Visit <https://countryeye.co.uk> and follow instructions to download the app.



December 2022 group walks

Our friendly group is one of 13 Ramblers groups in Kent and part of the national Ramblers walking organisation. We explore the beautiful countryside of Tonbridge and Malling and surrounding areas.



You don't have to be a Ramblers member to try a couple of walks with us, to help you decide if you'd like to join. If you're new to our walks, it's a good idea to contact the walk leader beforehand to check that their walk will suit you.

Why not make an early New Year's Resolution and join us on a walk soon?

Mistletoe over Oxon Hoath
January 2022

For details of all our December and future walks, and walk leader contacts, see www.tonbridgeandmalligramblers.org.uk.

Thursday 8 December	Leisurely circular walk from Shipbourne Common to Underriver. Includes 17 stiles!	5.6 miles
Thursday 15 December	Leisurely circular walk from Wrotham to Trottiscliffe; mainly flat with some road walking.	6 miles
Sunday 18 December	A circular walk in beautiful countryside around Plaxtol. Moderate difficulty	5 miles
Wednesday 28 December	Leisurely circular walk from West Peckham along the Greensand Way and Oxon Hoath estate with fine views of Hadlow Tower. Return via farmland, orchards and the Wealdway.	6.7 miles
Walks usually start mid-morning. There's a short break half-way through the walk (bring refreshments) and we usually finish near a pub.		

Environment and Waste Briefing September-October 2022

Dear colleagues,

I'm bringing together the separate Environment & Waste briefings which are issued to all KCC Members in advance of the Environment & Waste Cabinet Committee meetings. The aim of the briefings is to share with you all some of the highlights of work across my portfolio both within Kent County Council (KCC) and with external partners.

I trust you find it of interest and will share it with your communities.

Susan Carey

Cabinet Member for Environment, Kent County Council

Energy saving campaign

Share the Warmth is a Kent-wide campaign to encourage residents to help their friends and family save energy and stay warm at home.

Launching on 7th November, the campaign will direct people to an online platform where they will learn how to implement five important energy-saving measures. The platform will then encourage people to share this advice with loved ones who might struggle to access this energy-saving information or take the actions suggested to reduce their energy bills.

KCC, working with 7 districts, Medway and the NHS, was successfully awarded funding from the Local Government

Association for a supplier to design this behavioural insights trial to reduce demand on public services. We will be measuring the impact of this campaign which utilises the power of trusted messengers; friends, neighbours or relatives, to convey information and facilitate energy saving actions in more vulnerable residents' homes.



Please share this campaign on your social media platforms and via any other channels available to you. You can also take part and help your community identify some of the key actions that will reduce their energy use, save them money and reduce carbon emissions. The [SharetheWarmth](#) website will go live on 7th November.

Supporting low carbon business

90 small businesses in Kent have already signed up for the Green Recovery voucher scheme for up to £1,500 to implement an environmental project to help improve businesses' sustainability and resilience, and support economic recovery. There's still funding available and you can find out more here [Green Recovery vouchers – Kent County Council](#)

LoCASE (Low Carbon Across the South and East) recently held an online conference on retrofit (making buildings more energy efficient and comfortable). Attendees learnt about

Environment and Waste Briefing September-October 2022

what's being done already and presenters shared their experience of what works and what doesn't.

80% of today's housing is expected to still be with us in 2050 and will need retrofitting if we're to reach the Net Zero target. Retrofitting is an opportunity to improve living conditions for people as well as create jobs, and events such as this conference support growth in the retrofit industry.

Waste as a resource

Over 30 businesses gathered in Folkestone on 11th October as *Upcycle Your Waste* launched the first of a series of waste-matching sessions across the county. Businesses can be matched with other local organisations that can re-use or re-process their 'waste', realising the benefits of a circular business model for all parties.



One business that's already made a real success of using someone else's waste as their raw material is Elvis and Kresse, a luxury and ethical fashion brand. One of the founders of the company, Kresse Wessling will be speaking at the Kent Environment Strategy conference on 10th November about circular economy opportunities. The conference will also see the launch of a new partnership via the BLUEPRINT programme with the mobile app 'Kitche' that helps users reduce their food waste.



Images from the first circular economy workshop in Folkestone

St Katherine's School

Sustainable Urban Drainage (SuD) is the rather odd name for the rather brilliant concept of using clever design and nature to cope with excess water. The installation of two rain gardens now completes the second phase of a new SuD at St Katherine's School in Snodland.

The rain gardens are designed to capture run-off from the playground and car park areas and infiltrate the water into the ground. The gardens are being planted with a mixture of evergreen species, perennial herbs and nectar rich species. Along with managing surface water, the gardens will provide an educational resource for the pupils, herbs can be used for cooking and nectar rich species will attract pollinators. All SuD spaces within the school have been designed to enrich the learning environment along with reducing flood risk.

Plan Tree

I'm delighted to confirm that KCC has been awarded £98,500 from the Local Authority Treescapes Fund for tree planting. We have also been awarded £299,642 from the Woodland Creation Accelerator Fund (WCAF). This second grant is particularly welcome as it will fund two full time officers to work with partners and landowners to develop opportunities for tree establishment, secure the funding necessary to bring these projects to reality, and then oversee their delivery.

Environment and Waste Briefing September-October 2022

This increase in resource should mean we can lend members a little more support in their member scheme project development from next year. We will also be able to commission work to map opportunities for tree establishment, to help develop our project pipeline. The WCAF project will run until March 2025.

Kent REVS



Kent REVS electric van in action

The Kent REVS electric van trial scheme is now entering its final few months of the highly successful programme. The 'try before you buy' scheme has enabled over 280 local businesses to experience the benefits of an electric van, with around 59% of businesses seeking to purchase an electric van in the near future.

If you know of a business that would like to trial a KCC electric van, please email REVS@csLtd.org.uk and help KCC, Kent and businesses drive towards net-zero carbon emissions.

Heritage News

The final KCC Heritage Conservation Strategy, which was adopted earlier this year, has now been designed and published. It will be available soon on the consultation webpages [Let's talk Kent](#). Progress on the Action Plan will be reported to the Environment & Transport Cabinet Committee next year.

Great Big Green Week

Although the promotion of events was muted due to news of the late Queen Elizabeth, it was excellent to see 82 activities highlighted on our map of green action and have 2,000 visitors to our Let's Talk Kent pages to look up events, share their top tips and take a 'green pulse check' survey.



Activities and engagement across Kent during Great Big Green Week

Environment and Waste Briefing September-October 2022

Furniture reuse trial at Maidstone Household Waste Recycling Centre (HWRC)

I'm pleased to report that the furniture re-use trial mentioned in the last waste briefing has now started at the Household Waste Recycling Centre (HWRC) at Tovil, Maidstone. It's a joint project with the Making A Difference to Maidstone (MADM) charity, which supports individuals and families who find themselves in crisis through homelessness, domestic abuse, addiction, financial need, unemployment, relationship breakdown and more.



Residents can now deliver their unwanted furniture such as chairs, tables, wardrobes and bookcases to the HWRC, and after being assessed by site staff, re-usable items are placed in a dedicated container.

The furniture will then be collected and sold in MADM's charity shop to raise funds for the charity and their outreach work. Many of the items however will be 'gifted' to local people in crisis, ensuring items are provided to those who really need them.

If the trial is successful, we hope to extend it to more of our HWRCs.

Bike reuse at Ashford HWRC

Together with our contractor, FCC Environment, KCC hosted its first ever bike reuse event at the Ashford HWRC. Initially for 7 days from 15 October, due to the popularity of the scheme, this had been extended to (at least!) Sunday 6 November.

Residents can bring unwanted or broken bikes to be repaired and sold on or used for parts. We are working with a local Community Interest Company (CIC) called Cycle Circle which fixes the bikes and sells them at affordable prices.

Proceeds are used to fund the repair shop, as well as funding the roll out of the re-cycling programme called 'Cycle Community' with many community activities including bicycle training for all ages, as well as workshops for people to learn how to maintain and do simple repairs on their bikes.

In the first week alone, 32 bikes were collected at the HWRC for reuse.

This is another scheme that is being evaluated for roll out to our other HWRCs.



Environment and Waste Briefing September-October 2022

School visit to Allington HWRC and Energy from Waste facility

Site operator FCC Environment arranged a visit to Allington HWRC and the Energy from Waste (EfW) facility for pupils from Allington Primary School.

The Year 5 classes were learning about renewable energy and energy recovery. At the EfW, they were shown the tipping hall. It was explained how the cranes transfer the waste up to the shredders, which then provides fuel for the burners for incineration, which then feeds energy to the national grid. The children also went up to the Control Room which overlooks the waste bunker and saw the cranes in action (which I'm told they loved!)



The team received some great feedback from the class teacher, who explained how the visit really helped place their topic into meaningful context and how they found it all fascinating.

Visit to Countrystyle Recycling Ltd at Ridham



On 22 September I joined a small group of members and officers on a tour of Countrystyle Recycling Ltd in Ridham. It's here that several materials are taken from our HWRCs, and Waste Transfer Stations including bulky items which are shredded, baled and burnt to produce energy, as well as plasterboard and wood.

During the tour, we also learnt about the social value initiatives that the company undertake as part of the contract with KCC, including

school education, litter picking and a driver apprenticeship scheme. They are also working with KCC and FCC to provide wood to Men's Shed organisations to create bug hotels and bird boxes for the HWRCs (Men's Sheds are community spaces for men to connect, converse and create to help reduce loneliness and isolation.)

What happens to Kent's waste?

The latest in a series of short films providing tours around Kent's key disposal infrastructure, has been released. The films describe what happens to waste we receive from Kent's households.

This most recent film, shows how paper and card is recycled at the

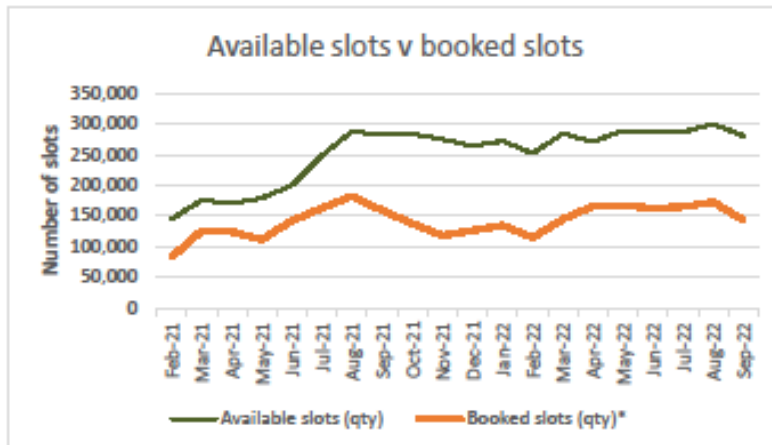


Environment and Waste Briefing September-October 2022

Smurfit Kappa paper recycling mill in Snodland. Last year, Kent recycled nearly 30,000 tonnes of paper and card. All the videos can be found on the KCC website at the following link: <https://www.kent.gov.uk/environment-waste-and-planning/rubbish-and-recycling/how-we-recycle-your-waste#tab-4>

HWRC booking statistics

The HWRC booking system continues to provide plenty of capacity to meet demand. In September there were 280,175 slots available and 142,800 bookings made. The busiest sites are Folkestone, Ashford and Margate with up to 70% of slots booked.



The busiest sites are Folkestone, Ashford and Margate with up to 70% of slots booked.

Same day bookings remain popular, with most recent data showing 45% of customers book on the day, 36% the day before and the remaining 21% booking further in advance.

Minerals and Waste Local Plan

Kent Minerals and Waste Local Plan 2023-38 has been updated to take into account the changes found necessary during the review process, the comments received in the initial consultation and the need to plan for a 15-year period. You can view this version and comment here [Kent Minerals and Waste Local Plan 2023-38 | Let's talk Kent](#) until 5th December.

Dates for diaries

8th November: KCC's Environment & Transport Committee. Papers for this meeting are published on the KCC website about a week before the meeting, the meeting is webcast live and a recording is then available on www.kent.gov.uk under 'council meetings'.

The agenda includes a presentation from the Kent Resource Partnership, which brings together the district/borough councils who collect household waste (the Waste Collection Authorities) and KCC which disposes of the collected waste (the Waste Disposal Authority). The reports also include the latest Performance Monitoring Report (more progress on meeting our carbon reduction target thanks to energy from our new solar park). There's also a report on Kent's Plan Bee and one on our second solar park now under construction at Kings Hill.

10th November: Kent Environment Strategy Conference hosted at Canterbury Cathedral Lodge. Tickets are now sold out and we have a fantastic line up of speakers covering adaptation, active travel, green finance, domestic energy and sustainable business as well as a marketplace full of stands representing green initiatives and businesses.

KENT'S PLAN BEE



October 2022 Summary Newsletter

Moths Matter – the new moth campaign from Butterfly Conservation

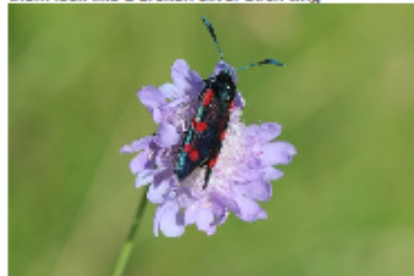
From 17 October to 6 November, Butterfly Conservation are highlighting the importance and beauty of moths on their social media and website (link in Emperor moth photo). The campaign, called Moths Matter, is dedicated to educating the public on the crucial role that moths play in the ecosystem. Butterfly Conservation have made lots of resources and information available on moths. From a downloadable guide to ways to start moththing in your own garden, there is lots to find out about moths! We've even put together a list of interesting moth facts below, to give you a feel about how amazing moths are!



Image from Butterfly Conservation. Emperor Moth (*Saturnia pavonia*) taken by Iain H Leach. Click the photo for webpage.



The amazing camouflage of Buff-tip moths make them look like a broken silver birch twig



Many moths, such as this Six-spot Burnet, fly during the day

Did you know?

- There are over 2500 species of moth in the UK!
- Many moths are pollinators, and vital for pollinating lots of our crops and nocturnal flowers that butterflies and bees don't see.
- They are crucial parts of the food chain, with both adults and larvae providing food for bats, birds, and mammals.
- Not all moths fly at night, many can be seen during the day.
- They are useful indicators of environment health, when the moth numbers go down it usually indicates that there is a problem affecting the environment.
- There are only two species of moth caterpillar that eat clothes and material, the rest eat plant matter.
- They are masters of disguise, with many moths adapted to hide in leaf litter, bark, and lichens. There are even moths that camouflage themselves as bird droppings!
- The other more colourful moths advertise their distastefulness through their bright warning colours.
- Some use the bright colours on their hindwings (hidden under their forewings) to confuse and stun predators, allowing them to get away. Some, like the Eyed Hawkmoth, have eye spots on their hindwings which they flash when provoked to deter predators.

Autumn and Winter Moths

On our Facebook page, we have been highlighting some of the moth families and the difference between them, as well as showing some moths you may have seen during October. Did you find any Merveille du Jour, Frosted Orange, or Lunar Underwings this autumn?

As we move into winter, there are still a few moths to be seen, such as the December Moth, Winter Moth, and Early Thorn. Some butterflies, like Peacocks and Small Tortoiseshell overwinter as adults in dark, cool places but can be seen on warmer days throughout the winter. You can help all of these and other winter pollinators by having wintering flowers in your garden. Check out the Butterfly Conservation's blog post on winter moths for more information. Click on the December moth photo to go to the blog.

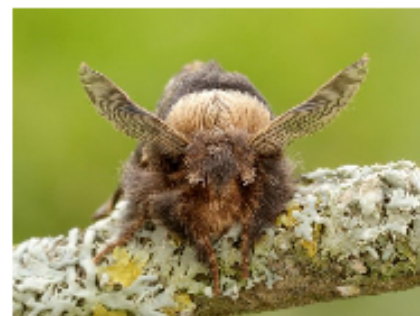


Image from Butterfly Conservation. December Moth (*Poecillocampa popul*) taken by Iain H Leach. Click the photo for the Winter Moth blog.

Pollinators feed all creatures great and small

This month, with the help of our Wild About Garden's volunteers, we are investigating the important role that pollinators play in the food chain.

Plants and pollinators

Most plants and animals, including human beings, could not survive without pollinators. Many plants and crops rely on bees, wasps, flies, beetles, butterflies, and moths to pollinate them so that they can fruit and set seed. More than twenty-five bee and hoverfly species visit apple blossom in Kent's orchards.



Apples, Sweet Chestnut, and Runner Beans all need pollinators

How plants contribute to the food web

- Flowers feed pollinating insects, voles, dormice, and shrews.
- Leaves and sap feed insects and their larvae, invertebrates, and herbivores such as rabbits and deer.
- Roots and decaying plants feed insect larvae and invertebrates.
- Seeds, berries and fruit feed rodents, birds, mammals, and people.
- An abundance of pollinators leads to good plant reproduction, providing diverse and rich food sources for small creatures such as insects and small mammals that are prey for carnivorous animals.



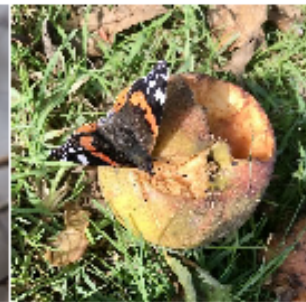
Nectar and pollen feed pollinators



Leaves and roots feed larvae



Seeds feed birds



Fruits feed insects, birds, mammals and humans

Predators rely on plant-eating prey

- Pollinating insects and their larvae feed dragonflies, damselflies, spiders, bats, lizards, mice, voles, hedgehogs, and foxes.
- Birds such as swallows, house martins, blue tits, robins, and wrens eat pollinating insects and their larvae.
- Small mammals feed weasels, stoats, foxes, badgers, and predatory birds such as barn owls.



Pollinators feed other invertebrates, such as spiders



Pollinators feed other insects, such as dragonflies



Pollinator adults and larvae feed birds and their chicks



Small mammals that eat pollinators feed owls



How can gardeners help?

To create a pollinator-friendly garden that will support the whole food web, gardeners can provide:

- [Flowers all year](#)
- [Shelter for pollinators](#) and [other wildlife](#)
- [Water for all wildlife](#)
- [A safe environment \(no pesticides\)](#)



Further information:

[Gardening for a Wilder Kent](#) [RSPB: Web of life](#) [Agricology: Pollination of UK apples: Who is doing all the work?](#)
[Researchgate: Confirmation that chestnuts are insect-pollinated](#) [Buglife](#) [Mammal Society: Species Hub](#)

Thank you to our wonderful Wild About Gardens volunteer Penny Brook for writing this month's article.
 Photo credits: P Brook

Pollinators to see in Winter

November sees many pollinators already hunkering down for the winter. There are a few exceptions where hangers-on from the summer may be seen, such as Common Carder Bees, Red Admirals, and Common and German Wasps. A few new species of moth can be seen, including Dark Chestnut, November Moth, December Moth, Mottled Umber, and Feathered Thorn.

The majority of pollinators you will likely spot are those that overwinter as adults. On milder days, you could see:

Bees: Buff-tailed Bumblebees

Moths: Herald, Winter moth, and Common Plume

Butterflies: Peacock, Small Tortoiseshell, and Comma

Flies: Marmalade hoverfly, Common drone flies, and Greenbottles

Wildflowers have also mostly stopped blooming, but a few hardy species carry on over the winter. Those to spot over winter include Gorse, Common Chickweed, Groundsel, Red Dead-nettle, Shepherd's purse, and White Dead-nettle. The Gorse and Dead-nettle flowers are important nectar sources if pollinators do venture out on warmer days.

Spotted any of these or any other pollinators and wildflowers? Post them on our [Facebook page](#), tag us in your photos @KentsPlanBee or [email us](#) your photos.

POLLINATORS TO SEE IN WINTER



Spotted any of these? Why not share them on our Facebook page @KentsPlanBee



Events in November

Tree Week

[Tree Week](#) happens on the last week of November, going into December (26 Nov - 4 Dec). It is the UK's largest annual tree celebration, run by the Tree Council. This week marks the start of winter tree planting season. We'll be posting lots of activities and information on our Facebook page throughout November in the run up to and on Tree Week itself.

Teach yourself Pollinator Identification

The cold, dark months of winter are often a little pollinator light, with many pollinators overwintering before emerging next spring. But that doesn't mean there is nothing to do. Why not cosy up in your house and learn some pollinator identification techniques so you are ready to go next spring? We have compiled a list of videos below that will give you a few tips on identifying some of our more common pollinators:

- Buglife – [Introduction to Pollinators](#)
- Bumblebee Conservation Trust – [The "Big 8" Bumblebees](#)
- Eco Sapient – [Leafcutter Bees](#)
- The Wildlife Trust – [How to identify Butterflies](#)
- SEWBRc – [Introduction to Macro Moths](#)

Wild About Gardens

The next online Wild About Gardens event taking place on [12 November is about building and maintaining a pond](#). You can book onto this and other events through the [Kent Wildlife Trust website](#).

Keep up to date with the latest news via our [Kent's Plan Bee Facebook page](#)

If you received this email indirectly and would like to subscribe to our mailing list, please email us on the address below with the subject line "Sign Up". If you wish to unsubscribe from this mailing list, please email us on the address below with the subject line "Unsubscribe".

Do you have a Kent pollinator news story or event that you would like featured in our newsletter? Have you created a pollinator friendly community space? Got your neighbours together to create a row of pollinator friendly gardens? Or do you have an event about Kent's pollinators you would like advertised? Email it to the address below and we will be in contact about a potential space in the Newsletter.

planbee@kent.gov.uk

All the previous editions of the Newsletter have now been added to our webpage. You can download them as PDFs or share the website address on your social media. Find all the Newsletters on the [Pollinators section of Kent County Council's website](#). Edited by Hannah Simmons, Graduate Biodiversity Officer, Kent County Council.

For a Pollinator Friendly Garden of England

